

REDBRIDGE SCHOOL

EARLY YEARS | PRIMARY YEARS | MIDDLE SCHOOL

OUR MISSION

Redbridge offers a **holistic, personalised** and **stimulating approach to education**, inspiring **creativity, a love of learning** and **international mindedness** through a joyful and collaborative **multilingual** learning environment.



A **innovative** and **experienced team**, passionate about students' well-being, progress and the importance of family partnerships.



A warm and **student centred education**, where a **changing** and **stimulating curriculum** respects the pace and needs of each individual.



A modern, purpose-built school aligned with our **sustainable approach to education**.



Meaningful opportunities to develop **creativity, determination, critical thinking** and **intrinsic motivation**.

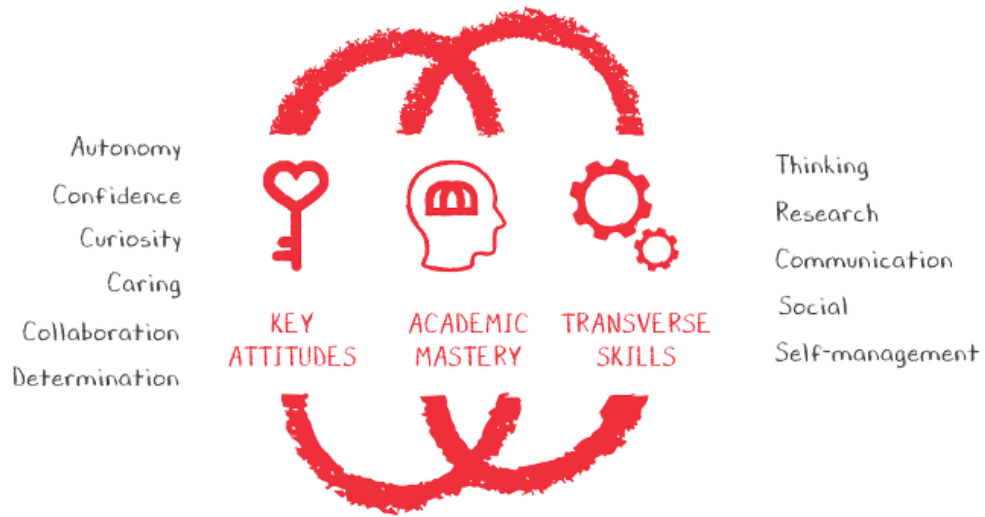


A **globally minded** and culturally diverse environment valuing **equity, kindness** and collaboration.



OUR APPROACH

Redbridge offers a **balanced approach** to learning, developing **key attitudes** and **transverse skills** to support students in achieving academic mastery and become fulfilled lifelong learners who contribute to society in a positive way.



Our students' **Personal, Social and Emotional Development (PSED)** is a fundamental part of our approach at Redbridge School. Therefore, we have invested in the best tools and programmes to support students develop their **Emotional, Relational** and **Spiritual Intelligence**.

We have developed a comprehensive programme for the **holistic development** of our students, including opportunities during the school day exclusively focused on PSED. To help us achieve this goal, we have selected **scientifically developed and well-researched tools** which jointly form part of our comprehensive PSED programme.

ACADEMIC MASTERY

Our education model supports the mastery of fundamental academic knowledge, the acquisition of transverse skills and learning to be autonomous, confident, creative, caring and collaborative.

We offer our students a **stimulating** and **multilingual** journey whilst following the guidance of national curricula:

Our **Early Years** programme follows the **French national curriculum** for the first three years of 'maternelle' whilst maintaining a strong focus on self-directed play, creativity and autonomy.



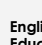
For **Primary years**, students choose between one of our **two bilingual pathways**, either the French/English pathway (French national curriculum from CP to CM2) or the Portuguese/English pathway (Portuguese national curriculum from 1^o to 6^o ano).

Our **Middle school** provision includes the continuity of the French/English pathway (from 6^{ème} up to the French Baccalauréat) and the **Cambridge Curriculum** pathway from year 8 up to the **IB Diploma Programme**.

EARLY YEARS

- **Multilingual** environment 
- **French national curriculum** for the first three years of 'maternelle'
- Strong focus on self-directed play, creativity, autonomy.

PRIMARY YEARS

- **Bilingual** pathway to choose from
 - **French/English** (CP to CM2), following the national curriculum of the French Ministry of Education 
 - **Portuguese/English** (1^o ano to 6^o ano), following the national curriculum of the Portuguese Ministry of Education 
- **English** taught as per the **Cambridge International Education Curriculum** 

MIDDLE SCHOOL

- Two international pathways to choose from
- **French/English** (6^{ème} to Terminale), following the national curriculum of the French Ministry of Education 
 - **Cambridge International Education Lower and Upper Secondary** 

EARLY YEARS PROGRAMME



Redbridge School follows the **French national curriculum** for the first three years of 'maternelle' whilst maintaining a strong focus on **self-directed play, creativity and autonomy**.

Our **3 year-old children** enjoy the comfort of a completely **adapted and personalised** nursery classroom and benefit from the caring teaching approach of three dedicated and full-time teachers: one **French**, one **Portuguese** and one **English** teaching assistant.

Our **4 and 5 year old children** are welcomed in one of our two **mixed age multilingual co-learning spaces**. The multilingual approach established in the first year continues with children accessing activities and instruction in all three languages throughout the day. Each co-learning space shares two homeroom teachers (one French and one Portuguese) and two English teaching assistants.

Children engage in **active-learning experiences** where their curiosity is encouraged and rewarded through **projects** inspired by their interests.

The **Movimento da Escola Moderna (MEM)** instruments and **democratic classroom** principles (Freinet) structure the school day and week.

Montessori resources are used to complement the dedicated classroom learning areas.



PRIMARY YEARS PROGRAMME



Redbridge offers two **lingual pathways** while supporting a personalised and trans-disciplinary approach where students learn through inquiry and engage with projects.



The **French/English** pathway, which follows the national curriculum of the French Ministry of Education (section accredited by the French Ministry of Education).



The **Portuguese/English** pathway (1º ciclo and 2º ciclo), which follows the national curriculum of the Portuguese Ministry of Education (section accredited by the Portuguese Ministry of Education).

At Redbridge School, we follow a **transdisciplinary learning through inquiry approach**. Our approach contextually incorporates all **curriculum** areas, develops **transverse skills** through **meaningful projects**, and inspires students' **curiosity**.

Mathematics is taught through the **Concrete, Pictorial and Abstract (CPA)** approach, tangibly introducing concepts and progressing to increasing levels of abstraction.

As a multilingual and multicultural school, a significant part of the day is dedicated to **learning languages**:

- For learning and developing **English**, the **Cambridge** programmes of **English** are introduced to provide a more structured curriculum and a rigorous approach to the development of proficiency in English. In addition, instruction and content are differentiated to support native speakers and students developing their English.
- In both bilingual streams, students learn a **third language**:
 - **Portuguese** in the French/English pathway
 - **French** in the Portuguese/English pathway





MIDDLE SCHOOL PROGRAMME

Our **Middle School programme** is a bridge between Primary and Secondary School, meeting the special development needs of early adolescence.

In line with this vision, our **tailored and age-appropriate provision for Middle School** includes:

National curricula delivered through a bilingual approach. In addition to English lessons, Mathematics, Music, Sciences and Art are taught in English;

A **flexible interdisciplinary curriculum** that inspires curiosity, encouraging active learning and student engagement;

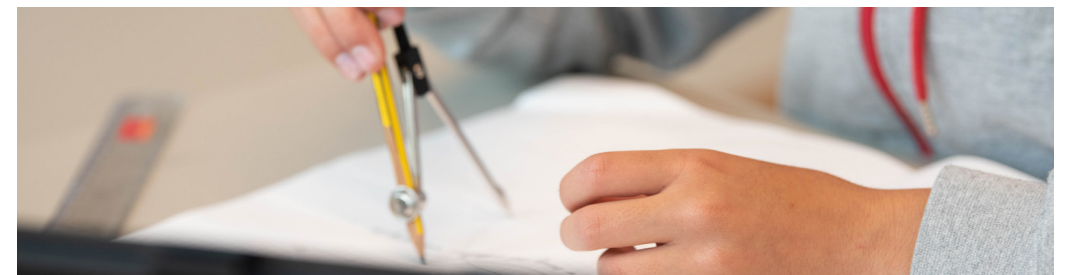
A **mentoring** relationship between teacher and student is established by assigning pupils to one teacher who will function as a mentor/counselor. This continuity gives students a sense of security, self-assurance, and purpose in their studies while also monitoring their general well-being;

Ideal learning communities with approximately 20 students per class;

An environment honouring and respecting **student voice**;

A focus on **expressive art** activities, including visual arts and music;

Particular attention to **health and wellbeing**.



CAMBRIDGE LOWER AND UPPER SECONDARY INTERNATIONAL EDUCATION PROGRAMME

Redbridge prepares students for a continuously developing and globalized world, which is why we immerse our students in the very best education, with a structured and rigorous programme.

As a continuum to our English/Portuguese pathway and as an alternative option for our students enrolled in our French/English pathway, as of Year 8 students follow the **Cambridge International Lower Secondary Curriculum**.

This will further develop and deepen our student's academic knowledge, mastery and curiosity in a multicultural context and environment.

The Cambridge Lower Secondary is an educational programme with global educational standards that creates open-minded, creative and dynamic individuals.

Students who complete the Cambridge Lower Secondary develop skills, knowledge and attributes that will prepare them for a successful transition to the **IGCSE** and the **International Baccalaureate** programmes.

The Cambridge Programme challenges and inspires students of all abilities through unrivalled choices of subjects.

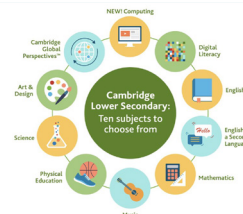


At Redbridge School students may select the following subjects:

- Mathematics
- English
- Art & Design
- Science
- Portuguese
- Music
- Digital Literacy
- French
- Physical Education
- Global Perspectives



Curriculum and assessment for 10 subjects



We work with **over 3500** Cambridge Lower Secondary schools in **140 countries**

The world's most popular international qualification for 14 to 16 year olds.

Over 800 000 entries every year.

Flexible - students can choose from 70 subjects in any combination.

4800 schools in **146** countries offer **Cambridge IGCSE**

A two-year programme for students aged 16-19, recognised internationally as a qualification for university entrance.

Emphasises critical thinking, intercultural understanding and respect for others in the global community.



An inspiring and caring learning environment



- A warm, holistic and learning-centred approach to education, personalised to each student;
- Ideal-sized groups of learners;
- A team of highly committed, caring and passionate teachers and staff;
- A healthy food education that complements our programme to ensure good personal health and well-being.



WHAT MAKES REDBRIDGE UNIQUE?

Strong focus on **personal, social, and emotional development**

- Morning meetings and closing circles;
- Working With Others;
- Special weeks and events celebrating different cultures.



Developing **key attitudes and transverse skills** to support **academic mastery** and promote **lifelong learners**.



Strong links to **local communities** and Portuguese culture.



A strong focus on **physical education**, with a wide range of **extracurricular activities** in **sports** and **arts**.



Multilingual and multicultural environment developing international, open-minded and culturally aware citizens.



Providing an immersive **outdoor learning** and **Forest School** experience through a programme tailored to the ages and developmental needs of our students.



450

STUDENTS

270

FAMILIES

36

NATIONALITIES

24

LANGUAGES
SPOKEN

83

FACULTY AND
STAFF

ADMISSIONS

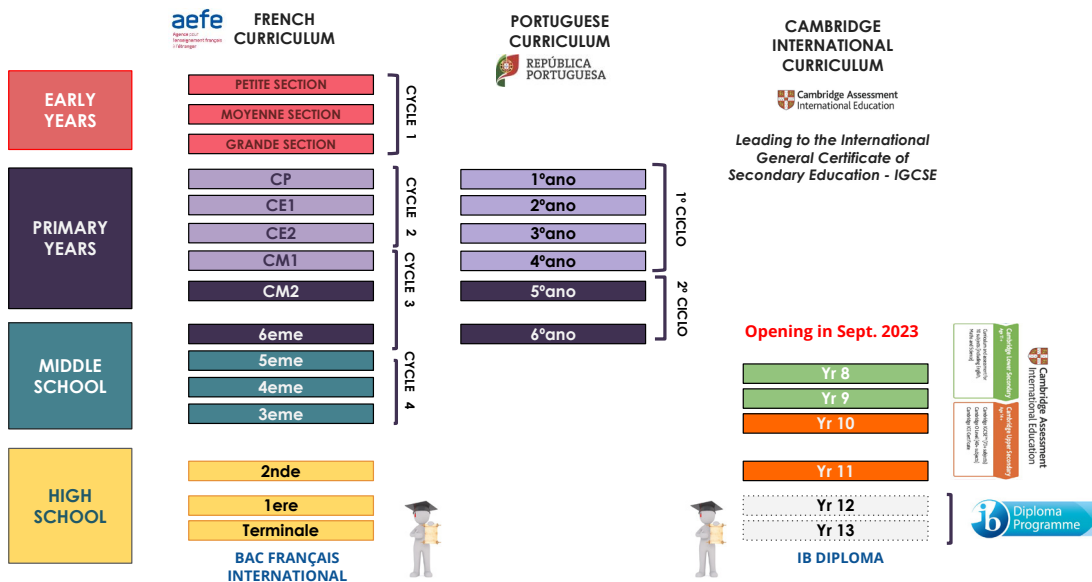
Redbridge is an inclusive school which provides high-quality education, catering to a wide range of students from varying backgrounds.

Redbridge School is committed to promoting cultural diversity in the student body, which aligns with Redbridges' core values.

For the 2023/24 school year, Redbridge welcomes students from **3 to 15 years old:**

- Up to 3ème in the French/English pathway;
- Up to 6º Ano in the Portuguese/English pathway;
- Year 8 in the Cambridge Lower Secondary Curriculum.

Each year, a new cohort will be added up to Year 13, the final year of Secondary School.



FEES FOR THE ACADEMIC YEAR 2022/2023

2022/2023 TUITION FEES

Please refer to the table below for discounts granted to siblings, founder families and for yearly payment.

TUITION FEES	MONTHLY PAYMENTS x 10	TERMLY PAYMENTS x 3	YEARLY PAYMENT* x 1	YEARLY PAYMENT* by 15th of July
EARLY YEARS	716.5 €	2 388 €	7 165 €	7 022 €
PRIMARY YEARS FR/EN (CP to CM2) PT/EN (1º to 6º ano)	927 €	3 090 €	9 270 €	9 085 €
SECONDARY FRENCH / ENGLISH (6ème to 4ème)	1 060 €	3 534 €	10 600 €	10 388 €
INTERNATIONAL SECTION (**) Grade 7 to 12				(**) Section to be opened in 2023 as a continuum for our bilingual Portuguese/English section and open as an alternative option for the Primary Years students enrolled in the French/English section.

(*) Should you choose this option, the invoice will be issued mid June 2022 for the full amount. Should the payment be received before the 15th of July, school will refund 2% of the yearly Tuition fees.

ADDITIONAL FEES

OTHER FEES	ANNUAL
ENROLMENT FEE (*)	3 000 €
REGISTRATION FEE (**)	550 €
ANNUAL INSURANCE FEE	25 €
SCHOOL MEALS (***)	Early Years 120 € x 10 Primary Years 130 € x 10 Middle School 140 € x 10

(*) The enrolment fee is a one-time payment when a student enrolls at Redbridge, mandatory and non-refundable (Cf. 1.3)

(**) Mandatory, non refundable annual fee (Cf. 2)

(***) Not refundable in case of absence

DISCOUNTS GRANTED TO SIBLINGS, FOUNDER FAMILIES AND FOR YEARLY PAYMENT

Discount type (cumulative)	Discount
Tuition fees for the second child (*)	- 5%
Tuition fees for the third child and other subsequent children (*)	- 15%
Annual tuition fees paid in advance before July 15th (*)	- 2%



CONTACTS

info@redbridgeschool.com



+351 210 522 550



Rua Francisco Metrass 97
1350-164, Lisboa

